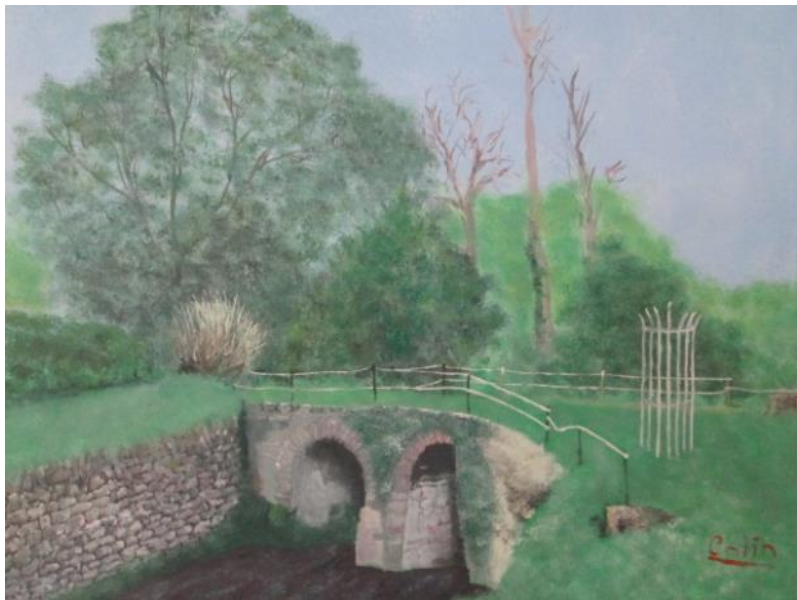


The Horsington & South Cheriton Villager

October 2021 Issue No.106



Bridge near Horsington Village Pond by Colin Gray

Chair	Sally Packer	370376	Treasurer/Adverts	Chris McCairns	370049
Compiler	Deborah Pitchforth	370867	Articles	Sheila Leaning	370899
Compiler	Trent Nicholson	370738	Articles	Jeanne Mortarotti	202265
Distribution	Bob Jones	370562			

Kindly printed by Thales UK

Please send all articles for possible inclusion in the next issue to
info@horsingtonmagazine.co.uk by noon on 12th October 2021

All opinions expressed in articles published are those of the authors and not of the magazine.

To view past and present copies of the Villager go to the Wincanton Window website
www.wincantonwindow.co.uk and click on the 'Villages' link.

Events Diary - October 2021

Day/Date	Time	Event	Venue
Fri 1st	10.00am	Art	Village Hall
Mon 4th	Lunch	Ladies' Lunch	Manor House, Ditcheat
Tues 5th	6.30pm & 8.00pm	Yoga	Village Hall
Thu 7th	10.00am	Art	"
	7.30pm	Parish Council Meeting	"
Fri 8th	10.00am	Art	"
Tues 12th	6.30pm & 8.00pm	Yoga	"
Thu 14th	10.00am	Art	"
Fri 15th	10.00am	Art	"
Tues 19th	6.30pm & 8.00pm	Yoga	"
Thu 21st	10.00am	Art	"
Fri 22nd	10.00am	Art	"
	7.30pm	Film: The Last Bus	Milborne Port V. Hall
Thu 28th	10.00am	Art	Village Hall
Fri 29th	10.00am	Art	"

Future Event

The Villager team are delighted to tell our readers that the magazine is once again to be printed by Thales in Templecombe.

The company supported the magazine for the first nine years of its life, until the interruption occasioned by the pandemic. We are very grateful that they are now able to undertake the printing again.

Thank you to Wincanton print for stepping into the breach during lockdown.

St John's Church Horsington

The Falkland Islands

**Half a world away – out of sight
..... and out of mind?**



An illustrated talk
on the history,
geography and
wildlife by
Adrian Pratt

**SATURDAY
20th NOVEMBER
at 7.30pm**

Suggested Donation £8
Refreshments after, for
St John's Church Funds



WHERE TO HEAR GOOD MUSIC again at last

I was asked to write this article just before Covid struck and concerts, choral singing, church performances and pop festivals, even Glastonbury, were all cancelled. Now, in the third quarter of 2021, music programmes are being re-instated so we can and should support and enjoy them.

Here are some of my/our favourite venues and their new Autumn and Winter programmes. This not a definitive list. There is so much good music of all types within relatively easy reach of our Parish. It is clear we are surrounded by music and the arts, in the middle of the venues and not out in the sticks. We tell our friends how lucky we are to have so many local events and larger venues within a 35 minute to an hour's drive (excluding parking and delays):



- 20/35 minutes and 10/25 miles: Sherborne, Wells, Bradford-on-Avon, Yeovil, Sturminster Newton, Ilminster and many smaller venues and events.
- Up to one hour and 35 miles: Bath, Salisbury, Poole and Bridport.

My personal love is classical music and jazz, string quartets and the piano.

Wells:

Cedars Hall at the Wells Cathedral Music School. This wonderful venue opened just 5 years ago. Its recital hall is named the Eavis Hall after Michael Eavis, founder of the Glastonbury Festival and former student at the school. It is now running a successful programme of classical, jazz and crossover concerts and talks in this intimate space for the general public and students alike. It will also be the home of the Wells Literary Festival this October.

You should discover this well-kept secret.

Tickets: <https://wells.cathedral.school/events>, Tel: 01749-834483

Wells Cathedral: the excellent programme of choral music and chamber choirs, promenade concerts, organ recitals, carols and the Sixteen is published annually and available on-line.

Tickets: www.wellscathedral.org.uk, at Cathedral box office or the door. Tel: 01749-672773.

Bradford-on-Avon:

The Wiltshire Music Centre based at the School site Ashley Road BA15 1DZ, across the river in the northern town, is a modern 300 seat concert hall with excellent acoustics. It has a full programme of about 2 or 3 events per week covering classical, jazz, big band, folk and world music and youth orchestras, family shows and on-line streaming. The current offer includes the Orchestra of the Age of Enlightenment, the Cory Band, Tenebrae, English Touring Opera, Coig Canadian folk, Stacey Kent jazz, Brodsky String Quartet, Pasadena Roof Orchestra, the Bradford Roots Music Festival and the GBH Big Band.

Sherborne: the Abbey and other venues including Sherborne Boys and Girls Schools. Much choral music and a very full 5 days May Bank Holiday Festival of music (cancelled this year).

Websites, etc: www.sherborneabbey.com.

Sadly, Dorset has closed its town tourist and box offices, including Sherborne's. The County website www.visit-dorset.com covers events in Dorset by date but further development of this site is badly needed. Better to view The List at www.list.co.uk/events/music/location Sherborne Dorset or find a copy of the Conduit or Evolver for their listings pages. Sherborne Boys School runs in early August each year a summer school of courses and music concerts open to the public. Sherborne Literary Society's Literary Festival runs over one week in October although reduced this year to 6 author talks over Sept-Dec.

Yeovil:

The Octagon, large barn of a theatre, and its new sister **Westlands Entertainment Venue**:

The Octagon's classical concerts are being restored with 8 monthly concerts now scheduled, featuring the Bournemouth Symphony Orchestra, Armonico Consort & Orchestra, Sinfonia Classica and various recitals. And there is the usual large programme of tribute bands and nostalgia evenings. The Yeovil Literary Festival has 20 author talks over 28 Oct – 2 Nov.

Website: www.octagon-theatre.co.uk ; Tel: box office 01935-422884 for tickets and the excellent brochure for both venues.

Sturminster Exchange: has been an excellent small town venue with a wide range of events and all types of music. It is only now coming back online so it is offering mainly tribute bands for the rest of 2021, but also the real live Marty Wilde (!) and his Wild Cats.

We saw Georgie Fame and his two granddaughters perform there in 2019 - a real treat.

Other Theatres: both below offer primarily live streaming of plays, opera and films.

Frome: Merlin Theatre: www.merlintheatre.co.uk ; Tel: 01373-465949.

Street: Strode Theatre: www.strode theatre.org.uk ; Tel: 01458-442846.

Dillington House, near Ilminster:

A beautiful venue in a classic Somerset country house and stables setting operated by Somerset County Council for adult education, training and conferences and events in South Somerset; on an event, a day visit and a residential basis with catering and accommodation. We have attended the string quartet and the annual guitar course concerts by many famous artists. However, the current programme is a little thin after Covid and this is of concern. The operating deficit has increased and the future of the venue is sadly uncertain.

Website: www.dillington.com/visit/events ; Tel: 01460-258648.

Ilminster Meeting House Arts Centre:

The website is currently showing 14 concerts from now to end 2021, classical, folk, soul, opera and 5 jazz concerts, and the Centre supports a strong local music scene.

Website: www.themeetinghouse.org.uk/music ; Tel: 014604973

Bridport: Bridport Arts Centre and the Electric Palace theatre:

Music with an emphasis on jazz, drama, dance, comedy, film, literature, the visual arts, etc.

www.bridport-arts.com and www.electricpalace.org.uk

Other local listings for occasional concerts, festivals, etc:

Milborne Port Village Hall: local events, films, live streaming, music, Milborne Port Opera.

Cerne Abbas Music Festival: the Gaudier Ensemble's 4 days in July.

Milton Abbey Festival: a week of summer school music and concerts in Milton Abbey.

Beaminster Festival: week at end June in St Mary's Church. www.beaminsterfestival.com .Iford

Festival: operas in the Peto Gardens of Iford Manor + some jazz. www.ifordarts.org.uk

Plush Music Festival in the Dorset Hills: run by Adrian Brendel but sadly no more.

Take Art – Somerset Rural Arts, theatre and music events in village locations funded by the Arts Council. In 2020, 40 events were programmed for Jan to May in 29 village halls. Paddy and Anthea Hughes, Sally and I had a wonderful evening with the Paprika Balkan Folk Band in North Cadbury village Hall.

Larger Regional Venues

Bath:

Bath no longer supports a large annual International Music Festival. The music scene is now larger, more diverse and less elitist. The week long Bachfest (February) and Mozartfest (November) are good substitutes for the International Festival and feature both UK and international artists. These events take place in the Bath Assembly Rooms, Guildhall, Abbey and two other churches. For information on these, all music and most other events around Bath visit **the Bath Box Office Website:** www.bathboxoffice.org.uk ;Tel: 01225-463362.

For Bath Theatre Royal see www.theatreroyal.org.uk; Tel: 01225-448844.

Poole:

Poole Lighthouse – centre for the Arts for the East Dorset conurbation and, according to Arts Council England, the largest arts centre outside London. It puts on a full programme of concerts, plays, music theatre, dance and live streaming of theatre and opera. The concert hall is the home of the Bournemouth Symphony Orchestra. The BSO's large and small orchestral groups dominate the classical music performances (but no string quartets) and the hall is also the venue for lots of jazz and for folk, swing, pop and tribute groups.

Website: www.lighthousepoole.co.uk ; Tel: 01202-280000.

BSO: www.bsolive.com ; Tel: 01202 669925.

Bristol:

Bristol is only 40 miles away but the poor road access from the south side extends the drive time from here to 1 ¼ hours and more at peak times. I like Bristol and there is much on offer so when we go we make a full day for our visit. Our two favourite places are:

St George's concert hall (near the top of Park Street not far from the NCP car park) for its café and its diverse 15 to 20 music events each month, classical, folk, world music and jazz.

The Tobacco Factory (south of river and more accessible for us) for its Shakespeare and classic theatre productions played in the round, its good bar meals and parking on the street. Bob and Jane Jones introduced us to the theatre and I include even though it is not a music venue.

The Bristol Hippodrome has regular visits from **Welsh National Opera** and features shows from London's West End and celebrities on tour as part of the Ambassador theatre group.

The Bristol Beacon, previously the Colston Hall and name changed due to Colston's link with the transatlantic slave trade, has been closed since Sept 2018 and after substantial delays and huge cost overrun will not now re-open as Bristol's major concert hall until 2023.

Websites: www.stgeorgesbristol.co.uk ; 0845-4024001. www.tobaccofactory.com ; 0117-9020060. Welsh National Opera www.wno.org.uk .

This is a good time to get on the e-mailing lists and mailing lists!

Jonathan Packer

HORSINGTON OPEN

There was a great turn-out from Horsington residents for the annual Horsington Open charity golf tournament. This started 11 years ago as a fun game to help promote the Half Moon, and has since grown into Henstridge Golf Club's biggest event, with over 72 competitors.

Despite its size, the day remains a relaxed and friendly fun event. Several competitors turn up in outlandish costumes and there's a party atmosphere throughout.

The competition for the coveted Claret Jug is stiff, and the golf handicap system ensures that the less able and experienced players have a chance.

This year's competition was won by Trevor Legg from Henstridge. Richard Gaunt, who is normally well down the field, had a good day on a big handicap, and was the runner up, closely followed by Chris Bailward, Peter Gripper, and Denise Case just a couple of points behind.

George Wagland, representing the sadly closed Half Moon, won the parallel competition for players without an official handicap. Horsington's other contenders Mark Warren, David Blake, Phil Warren, Andrew Tarling and Anthony Yateman fought valiantly but were further down the rankings. The latter deserves a special mention as he managed to avoid coming last, and therefore missed out on a bottle of gin, won by Howard Bentley-Marchant.

In the team event. Horsington's top team, the Home Farm Harriers, led by Chris Bailward, came third, beating the Grippers by a point. The Horsington Hackers, led by David Blake, last year's winners, followed behind, tying with Richard Gaunt's The Improbables for 11th place.

The day raised over £1200 for the Somerset Air Ambulance and St Margaret's Hospice, and organisers Richard Gaunt and David Blake (now residing in Bath) would like to thank everyone who took part and for their generous donations and prizes, especially the White Horse and Vale Motors.

Next year's competition is on Saturday September 3rd 2022. Why not join us? Henstridge Golf Club is the friendliest around and the membership rates are reasonable, (but you can just pay and play). Give it a try!

Richard Gaunt



Horsington Parish Council - Autumn Update

This time we start with the great news that the Parish Council is back to full strength. We have recently welcomed both Gill Miles and Justine Kemp; both familiar faces around the parish and both bringing a wealth of knowledge and experience that will be a huge asset to the council.

The annual inspection of the play area has recently taken place and we're delighted that on this occasion no significant issues were found. We have a few maintenance activities to undertake, the planning of which are underway, and a few areas that we'll need to monitor over the coming months, but fundamentally all is in good shape.

We're also in the process of organising for the silt trap at the pond to be cleared and are hopeful that we'll be able to do this within the next few weeks. The silt trap was installed as part of the pond renovation project in 2016 and was intended to turn a major, once-a-decade major excavation job that decimated wildlife in the entire pond into a smaller, more frequent but far less impactful task - something it has very successfully done. It's a job that, due to environmental legislation, has to be performed using approved contractors but is something that is planned for within our budgeting process. We apologise in advance for any disruption caused by the works; it usually only takes one day and is needed once every two or three years depending on the amount of heavy rainfall we have received.

Finally, we'd like to remind all parishioners that your Parish Council are all volunteers who freely give up their time for the benefit of our villages. There have been a couple of occasions recently where councillors have been subjected to less than cordial exchanges with parishioners, especially in relation to planning matters. Planning law is becoming increasingly complex and often appears illogical; it is also often impossible to please everyone. We will always use our judgement to make recommendations to the District Council (which makes planning decisions) that we believe are in the best interest of the entire parish. We understand that, due to our recommendations, we occasionally disagree with applicants or those affected by proposed plans - that comes with the job - we just ask that we do so agreeably please.

Mark Tucker

HORSINGTON CHURCH

From the Rector

There is a story told of an ambitious employee who was set on climbing the corporate ladder. She worked hard and sacrificed all that was needed to reach the top, only to discover that the ladder was up against the wrong wall!

Jesus told a story about this. 'Everyone then who hears these words of mine and acts on them will be like a wise man who built his house on rock. The rain fell, the floods came, and the winds blew and beat on that house, but it did not fall, because it had been founded on rock. And everyone who hears these words of mine and does not act on them will be like a foolish man who built his house on sand. The rain fell, and the floods came, and the winds blew and beat against that house, and it fell—and great was its fall!'



The ladder our employee climbed was like the house built on sand. Only when she reached the top did she realise her mistake. And here Jesus is suggesting that we can avoid making this same mistake by building our lives on the teachings and example of Jesus; by ensuring our ladders are against this wall, and not the walls of culture, popular opinion, ideologies, or religions. For experience tells us that our lives, in the short term, do encounter curved balls that can so easily throw us off balance. The loss of a job or project, our health fails, an unexpected bill we haven't budgeted for, a family crisis. At times like these, will we find our ladders against the walls built on sand, or the against the walls built on the solid foundation of our Judeo/Christian ethics and values as inspired in our bibles?

Christian wisdom is taking time each day to become more familiar and acquainted with the content of our Bibles and seeking to apply what we discover in our everyday lives. This is building on the rock.

But why do this alone? Come and join us on Sundays at 10.30am or weekday evenings at 5.30pm. Or you may wish to join the home group on Saturday mornings, or the Bible study on Wednesday afternoons. Keep an eye out on our website ([St John the Baptist - A Church Near You](#)) or our Facebook page for more information. We would love to welcome you.

Rev. Kevin
Tel: 01963 363832

A change to the Church Activities:

Evening Prayer daily (except Sundays) at 5.30pm via Zoom
(ID: 442 929 840; Password: 007292)

1st, 2nd, and 3rd Sundays at 10.30am in the Church Building

4th Sunday at 10.30am at St. Mary's Church building in Templecombe

For more detailed information, please visit our website
achurchnearyou.com and search for **Horsington**.

Moviola - Milborne Port (Village Hall)

Friday 22 October 2021

Showing on our new Big Screen is THE LAST BUS (12A)

80-something Tom (Timothy Spall), whose wife has just passed away, uses his free bus pass to travel from John O'Groats to Lands End where they first met, using only local buses. It's a nostalgic trip, but he's also carrying his wife's ashes in a small suitcase, 'taking her back'.

In the course of his travels he interacts with local people, and by the end of his trip he has become a celebrity.

On sale from 1st October 2021, exclusively from Wayne Pullen, Butcher, High Street, Milborne Port.

Advance tickets are £5.00 each (no concessions)

Tickets will be available on the door, priced at £6.00 each, (no concessions).

Doors open at 7.00pm, with the show starting at 7.30pm.

A limited alcoholic bar will be available selling beer and a selection of wines.

Martin

01963 251217



Anyone for Badminton?

As a result of the Covid pandemic, the Badminton Club, which used to play on the court in the Village Hall, disbanded.

If anyone is interested in re-starting the Club or simply using the facility again, please contact either Emilie Gordon, Vicky Franklin or John Macdonald.



Bobologism 29

Most of us have heard of the hamlet in South Dorset called Sixpenny Handley. What a strange and unusual name. However did that name come about?

Well, the old Celtic word for a hill was Pen. More about that later if I have room. There was a hill occupied by the Saxons (whilst the native Celts were in the valley) and the hill became known as the hill of the Saxons- Sax-Pen; which became Sixpenny. I'm not sure where the Handley came in; probably someone's name.

On a rise at the foot of Snowdon, in North Wales, is a hamlet with a pub called the Pen-y-Gwrid. (pronounced "Goorid") The word Pen crops up everywhere in Wales, always referring to a hill. My uncle had a house called Pengarth, and we used to stay at a farm called Penlan. Incidentally the path up Snowdon from Pen-y-Gwrid, walked by my family in May, is called the "Pig-Track". It has nothing to do with pigs, but come from the name of the hamlet P-y-G. Another common word from the Celtic, or Welsh, is Cwm, written Combe in English, meaning a valley. My house is called Combe Mead, meaning the meadow in the valley, and was named so long before we arrived in the village.

When my parents took us on holiday to Brittany in the early 1950's my father, who spoke Welsh before he spoke English, was fascinated by how many Welsh words there were there, all of course derived from the old Breton language, closely related to Cornish and Welsh.

Bob Jones

Land with Roadside Access Wanted

Parcel of rural land (between 0.3 and several acres) with roadside access wanted. Prices up to and in the region of £50,000 considered, size and location dependent.

For more information, contact
dominiqueprince15@outlook.com



ANNOUNCEMENTS

Including *Births* Deaths* Birthdays* Weddings* Anniversaries* Congratulations*
If you have any announcements, articles for sale or to give away,
babysitting services etc. you would like included please contact

info@horsingtonmagazine.co.uk

WELCOME: **Phillip** and **Minnie Ryegate**, who moved to Foxcombe Lane, Horsington at the end of August.

We warmly welcome to the village **Chris** and **Debbie**, **Max** and **Amy Morgan**, of Corner Cottage, Horsington. Chris and Debbie had a small business in West Sussex, and Max and Amy are gainfully employed locally.

We welcome too **Paul** and **Janet Burrows** who moved to the Old Bakery in Horsington, also from Sussex, nearly two years ago. We wish them a belated welcome (Covid has a lot to answer for!)

We always like to welcome newcomers, so if you hear of anyone who has recently moved in to our villages please let the Villager know.

K. SANSOM CHIMNEY SWEEP

Brush & Vacuum
Woodburners etc
Also mini-marquee hire with
furnishings, flooring etc
01963 370038



Kington Magna
HAIR CUTS
next to the village hall
HERE
At
Willow Cottage

Call Julie on 07966 264621

Mobile appointments also available

**To Book or ask
for a pricelist**

Barbering, Family Trims,
Weddings, Cut & Blow-dries/Sets,
Colours, Foils, Balayage, Perms.

SOUTH CHERITON GARAGE LTD.

EST. SINCE 1983



TEL: 01963 370179

Mark Pearson Electrical Services

NAPIT registered

5 Houndsmill, Horsington

07875 081103

Computer Maintenance & Repairs

Purchase Advice, Virus Removal, New PC Setup/Installation,
Internet Connection, Upgrades, Computer/Software Tuition

Call Gregg on 01963 370713

CRABB TAXIS

*Your Local, Friendly Service for
Airports, Stations, Shopping etc*

07950 826962

Local & long distance covering Wincanton, Templecombe & Henstridge



Jump & Go

Dog Training

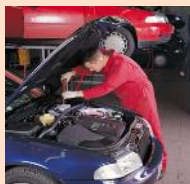


A secure dog exercising field for-ACTIVE PAWS

01963 371565 07359 141529 or 07359 141649

woof@jumpandgo.co.uk

www.jumpandgo.co.uk



DALES CAR REPAIRS LTD

Established in 2000

LARGE STOCK OF TYRES

Modern workshop to carry out all your repairs and servicing to a high standard at a competitive price.

Free collection and delivery services from South Cheriton or Horsington.

01963 31122 or 07767 201919

**Unit 21/22 Lawrence Hill, Business Centre, Wincanton,
Somerset BA9 9RT**



I.C.T Garden Maintenance

- Mowing
- Mulching
- Strimming
- Scarifying
- Hedge Cutting
- Leaf Vacuum
- Chainsaw
- Spraying
- Rotovating
- Pressure Washing
- Garden Clearance



07875 497869

ian@ictgardenmaintenance.co.uk

PEVLINGS FARM

RIDING & LIVERY STABLES

Traditional riding school offering
riding lessons, hacking and more
Tiny tots – adults (lightweight)

PONY CLUB LINKED CENTRE
BHS APPROVED - ABRS APPROVED
RDA ACCESSIBILITY MARK ACCREDITED
DIY Livery

Licensed by South Somerset District Council

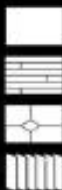
Proprietor Alison Tytheridge

Email: pevlings.stables@hotmail.com

Tel: 01963 370990 www.pevlingsfarm.co.uk



Good value, professional & efficient service, supplied & fitted...



Carpets, Carpet Tiles

**Vinyl, Wood, Laminate,
Natural Flooring**

Ceramic Wall & Floor Tiles

**Vertical Roller
and Venetian Blinds**

Stockists of Amtico and Karndean

SJH Carpets, Tythings Commercial Centre, Wincanton

T: 01963 824418 • Open: Mon-Fri, 9am-5pm; Sat, 9am-1pm

Also at High Street, Tisbury • T: 01747 871178 (closed Wednesday)

E.C. SERVICES

Decorating, Tiling & Property Maintenance

07966 932 869

Call for Advice and Free Estimate

The New Barn, Popes Farm, Marnhull

CONTACT LIST

(all phone numbers start 01963 unless otherwise stated)

NAME	CONTACT	TEL NO
Bellringing	Anna Piechna	370749
Buses (local)		0871 2002233
Citizens Advice Bureau, Wincanton		0344 88 9623
CAT Bus Ring and Ride Service		33864
Doctors' Surgeries	Milborne Port (inc Templecombe)	250334
	Wincanton Health Centre	435700
French/Italian Conversation	Jeanne Mortarotti	202265
Horsington Church School	Head/Secretary	370358
Governor	Connie Hurt	07785 373388
PTFA	Abby Spoors	
	abzspoors@gmail.com	
Ladies' Lunch Group	Rosemarie Wigley	371478
	Susan Maltin	371400
MP	David Warburton	020 7219 5225
Parish Council		
Chair	Mark Tucker	370910
Clerk	David Chapman	370527
	www.horsingtonnpc@gmail.com	
St John's Church		
Rector	Rev. Kevin Rogers	363832
Wardens	Anne Jones &	370626
	Stephen Miles	370823
Scouts	Geoff Crabb	370623
Social Services		0845 345 9133
South Somerset District Council		01935 462462
U3A	Susan Kidd	362107
Village Emergency Telephone System (VETS)		602500
Wincanton Town Council		31693
W.I.	Jackie Pyne	370713
Village Hall	www.horsingtonvillagehall.co.uk	
Chair	John Macdonald	370444
Bookings	Emilie Gordon	371396
Art	Gill Elston &	370236
	Jane Hooper	01308 861690
Football	Keith Norman	370332
Yoga	Emma Riley	0788 424 6550
		370830