

## WINCANTON AND DISTRICT GARDENERS' ASSOCIATION

PRESIDENT	Mr M. de C GILES
VICE PRESIDENT	Mrs J.SMITH
CHAIRMAN	Mr R D D'ARCY
VICE-CHAIRMAN	Mr W P RODGERS
TREASURER	Mr C M WORKMAN

### **SHOW CO-ORDINATOR**

Mrs Inge Nicholls  
12 Southgate Drive  
Wincanton  
Tel: 01963 32081

### **ASSOCIATION SECRETARY**

Mrs Gill D'Arcy  
26 Springfield Road  
Wincanton  
Tel: 01963 33160

**Membership** Mrs Julie Eddington 01963 33585

### **GENERAL COMMITTEE**

Mrs A Cook, Mrs J. Eddington, Mrs C Spencer, Mrs J Findley.

The objects of the Association are the promotion and advancement of horticulture and friendliness

Membership is open to all, with a varied programme of talks, slide shows, quizzes etc and summer outings include visits to gardens and other places of horticultural interest.

There is also the opportunity to buy seeds, compost and other garden requisites at advantageous prices.

The annual membership subscription is £5.00 per year payable from November 2017.

We hope you have enjoyed the Show – if you would like to make any comment, suggestion or criticism, the Show Co-ordinator will be pleased to hear from you.

## **WINCANTON & DISTRICT GARDENERS' ASSOCIATION SCHEDULE**



## **62nd ANNUAL SHOW**

**MEMORIAL HALL**

**WINCANTON**

**BA9 9JF**

**SATURDAY 2nd September 2017**

**DOORS OPEN 2.00PM**

**ADMISSION: ADULTS £1 and CHILDREN 16 &  
UNDER FREE**

## SHOW RULES

1. Wherever possible, this Show will be conducted in accordance with the rules as stated in the latest edition of the Royal Horticultural Society's (RHS) Show Handbook, a copy of which is available for reference. Rules stated below will also apply. Any contingency not thus covered will be settled by the Committee, whose decision will be final.
2. Exhibits in all horticultural classes must have been grown by the exhibitor, or have been in his/her possession for at least two months. In both cases they must be the property of the exhibitor.
3. All cut flower exhibits in horticultural classes must be shown in vases, in water or water retaining material e.g. oasis.
4. All exhibits in the non-horticultural classes must have been made by the exhibitor.
5. **NOVICES** The Association's definition of a novice is as follows: an exhibitor who can state truthfully that he/she has not previously won any prize, anywhere, for the class in which he/she now intends to exhibit

## 6. ENTRIES

- (a) All entries must be made on the forms provided
- (b) Each competitor must use a separate entry form: joint or family entries will not be accepted
- (c) In all Sections an exhibitor may make a maximum of two entries per class. Each entry will be eligible for a prize on its merits
- (d) ***Entry forms with total fees must be delivered to the association secretary or the Show Co-ordinator Mrs I Nicholls, 12 Southgate Drive, Wincanton. BA9 9ES  
BEFORE 9PM ON SATURDAY 26 AUGUST 2017***  
**Late entries may be refused**
- (e) The Committee reserves the right to refuse any entry
- (f) Entry fees are as follows:

Association Members	20p per entry
Non-members	25p per entry
Children (in adult classes)	10p per entry
Children's Classes	No Charge

Note: A member is a person whose subscription has been paid for the current year.

## FLAPJACKS

### Ingredients.

6oz/175gms Butter  
6oz/175gms Demerara Sugar  
1 tbs Golden Syrup  
8oz/225gms Porridge Oats  
3oz/75gms Sultanas  
3oz/75gms Cocktail Cherries (no juice)

### Method

Line a 10" X 6" tray or 25 X 15 cms.

Melt butter, sugar & syrup in a saucepan. Stir in oats, Sultanas and cherries.

Pour into the lined tray.

Cook for 20 minutes on 350F, 180C or Gas 4.

Whilst cooling cut into squares.

## RECIPES

### CHEESE BISCUITS

#### Ingredients:

100g/4oz plain flour  
75g/3oz butter at room temperature  
50g/2oz mature, grated cheddar cheese  
1 extra large egg yolk  
finely grated parmesan cheese for sprinkling

#### Method

Lightly grease 2 baking trays. Pre heat oven to 190°C, 375°, Gas mark 5.. Rub butter into flour until it looks like breadcrumbs. Stir in grated cheddar. Reserve a little egg yolk for glazing and stir in remainder. Bring the mixture together and wrap in cling film and chill for about 30 minutes. Roll out dough to a thickness of about ¼ " (5mm) cut into biscuits using a 2inch max round cutter. Place on baking trays, brush with remaining egg yolk and sprinkle generously with grated parmesan. Bake for 10 – 15 mins until golden. Lift off trays and allow to cool on a wire rack.

### CHOCOLATE VICTORIA SPONGE CAKE

#### For the cake

225g / 8oz Butter or Margarine  
225g / 8oz Caster Sugar  
4 Medium Eggs  
175g/6oz Self Raising Flour sieved  
50g/ 2 oz Cocoa Powder

#### For the Icing

75g / 3oz Unsalted Butter  
175g / 6oz Icing Sugar plus extra for dusting  
45g /3tbs Cocoa Powder  
approx 10ml Milk or Warm Water

Pre heat oven to 180degrees/170 degrees (Fan Oven)/Gas Mark 4. Grease and line two 8inch / 21 cms sandwich tins.

Cream together the butter and sugar until light and fluffy. Gradually beat in the eggs and if the mixture starts to curdle, add a little flour.

Fold in remaining flour and cocoa powder with a metal spoon.

Divide mixture between the tins and bake for approx 25 minutes until golden brown and firm to touch. Remove from oven and leave to cool before turning out onto cooling rack.

Make the butter icing by placing butter into a bowl and beat until soft. Gradually sift and beat icing sugar and enough milk/water to make icing fluffy and spreadable. Add cocoa powder beat into icing and use to sandwich the two sponges together. Dust the top with icing sugar.

## 7. STAGING

- a) Exhibits must be staged between these times:

7.30pm – 8.30pm Friday 1st Sept.

8.30am – 10.30am Saturday 2nd Sept.

All exhibitors other than officials must have left the exhibition hall by 10.35am on the Show day.

- b) All exhibits must remain on display until after the prize-giving and raffle, when a bell will be rung, and then exhibits should be promptly removed. Any remaining after 15 minutes will be deemed to have been left for sale as a contribution towards the funding of the Show.

- c) Any exhibit which does not conform to the scheduled requirements will be judged as N.A.S. (Not According to Schedule), and so disqualified

## 8. AWARDS

- a) **Trophies.** The system of calculating winners' trophies has the total amount of points won by an exhibitor in the stated section(s) as the deciding factor.

In addition to the trophies listed in the section headings there are: The Clementina Cup for Sections A-G inclusive, and The Banksian awards given by the Royal Horticultural Society; The Banksian Medal, for Sections A,B and C and the Bronze Medal for the runner-up to the Banksian Medallist.

By R.H.S. rules the winners of the Banksian Medal in 2015 Mr R D'Arcy, and in 2016 Mr M Giles are not eligible to compete for either of these awards in 2017; runners-up in any year are not excluded in this way.

- b) Prizes. Points will be awarded as follows

	1 <sup>st</sup>	2 <sup>nd</sup>	3 <sup>rd</sup>
Standard Rate	3	2	1
Class 26	6	4	2
Classes 1,8,27,36,59	9	4	2

- c) Certificates. These will be awarded as listed under Section headings

- 9 The R.H.S. Banksian Medal and RHS Bronze Medal awards become the property of the winners. All other trophies may be held by the winners for a maximum of one year from the date of the Show at which they were won, but will remain the property of the Association, who will require a receipt for all such trophies.
- 10 A prize will only be awarded if the standard of the exhibit is judged to be of sufficient merit. The judge's decision will be final.
- 11 Any protest must be delivered to the Show Co-ordinator in writing **before 3.00pm on Show Day.**
- 12 All exhibits and other belongings shall be at the risk of the owner; the Association will not hold itself responsible for any loss or damage to these, or any personal injury sustained, while on Show premises.

#### NOTES

- In all "Collection" classes, only one variety of each distinct kind is to be shown; unless otherwise specified, the number of specimens in that variety is to be the same as listed for individual classes. Where there is no separate class to take as a guide, the number of specimens shown shall be at the exhibitor's discretion.
- Saladings: classified as vegetables, cooked or uncooked, which are eaten cold in salads
- Carrots: "pointed" may include intermediate varieties and St Valery; "other" varieties (not "pointed") include Nantes, Sutton's Favourite and the Chantenay type.
- Potatoes: suggested exhibit sizing 6-8oz (170-250 grms)
- Wherever possible, the variety exhibited should be named, this could not only be a telling point in the exhibitor's favour in close competition, but will add to the general interest.

#### PROGRAMME

Hall closed to exhibitors	10.35am
Judging commences	10.45am
Public admitted	2.00pm
Prize giving and raffle	3.30 pm

<b>Removal of produce</b>	<b>BY 4.30pm</b>
---------------------------	------------------

Price of admission to Show at **2.00pm** – Adults £1, Children 16 & under Free,

## Spoilt for choice!

*Visit our new showroom to see our extensive range of flooring*



- Carpets    ■ Vinyls
- Naturals   ■ Woods
- Laminates ■ Tiles

Domestic & Commercial Flooring  
Friendly & Helpful Advice  
Free Measuring and Quotation

**FREE PARKING OUTSIDE THE DOOR**  
*Call in today!*



**SJH**  
CARPETS &  
FLOORING  
Wincanton

**SJH CARPETS, Southgate Road, Wincanton**  
☎ 01963 824418

*Also at: High Street, Tisbury*  
☎ 01747 871178



## Wincanton & District Gardeners' Association AGM

At Memorial Hall, Wincanton  
On Friday,  
At 7.00pm 6th October 2017  
Coffee & tea available

Meeting, followed with a talk by  
Sue Hazeldean on Bulbs



# RAM SPORTS

20 High Street Wincanton

Engraving & Trophies - Services  
Printing & Embroidery - Souvenirs  
Sports Equipment & Clothing  
School Uniforms - And Much More

Ram Sports are pleased assist WDGA

Tel: 0196331779

[www.ram-sports.co.uk](http://www.ram-sports.co.uk)

## Highfield Landscaping

Patio's, Stone Walling, Fencing, Gabion Baskets, Tarmac Drives, Garden Clearance and all aspects of Landscape gardening.

### Kevin Meyrick

Highfields, Dancing Lane,  
Wincanton, Somerset, BA9 9DE

01963 34655 Mob. 07815 204 063  
[carolandkevin1@hotmail.co.uk](mailto:carolandkevin1@hotmail.co.uk)



## Great offers for gardeners this year...

Whether you're improving your outdoor space or starting from scratch, we have some great deals for you this year.

We offer dream driveways, perfect patios, decking, artificial grass, furniture, shed, arbours & BBQs as well as planters, sleepers, decorative items & much more.

Visit your local Kellaway branch today at Unit 3a, Lawrence Hill Business Centre, Saxon Way, Wincanton Business Park, BA9 9RT, call us on 01963 828333 or visit our website [www.kellaway.co.uk](http://www.kellaway.co.uk).



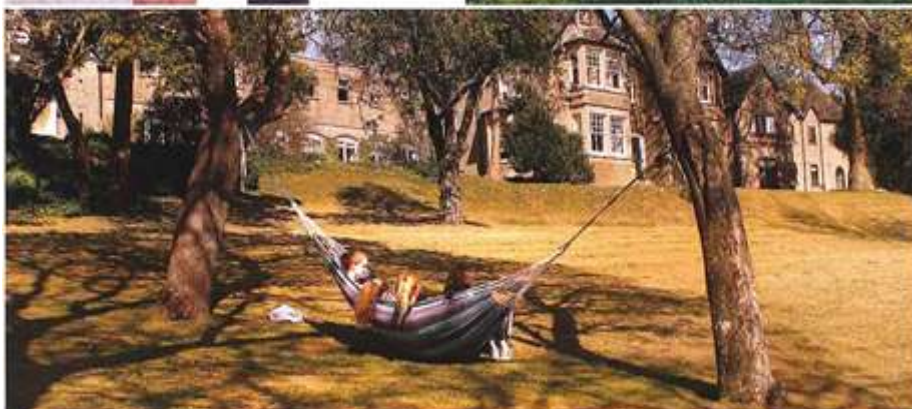




BRUTON SCHOOL  
FOR GIRLS  
ON SUNNY HILL

*'a light should be  
shone on it'*  
Good Schools Guide 2015

THE  
GOOD  
SCHOOLS  
GUIDE



Come and see what makes us different



SUNNY HILL • BRUTON • SOMERSET



T 01749 814400 W BRUTONSCHOOL.CO.UK E ADMISSIONS@BRUTONSCHOOL.CO.UK

Day and boarding school for girls aged 7-18 Day school for girls and boys aged 3-7

## Castle Gardens

award-winning garden centre and restaurant in Sherborne



**A wide selection of indoor and outdoor plants,  
trees & flowers all year round.**

Free delivery within 25 miles - two year hardy plant guarantee  
tree planting - garden design - hanging basket & container planting  
plant loan - free gift wrapping

Free talks & events all year round & award-winning Christmas displays  
from October - December.

**FREE expert advice on the best seasonal planting options in store.**

New Road, Sherborne, Dorset DT9 5NR | 01935 814633

Open Monday-Saturday 9.00am-6.00pm

Sunday 10.00am-4.30pm (tills open at 10.30am)

[www.thegardeneronline.co.uk](http://www.thegardeneronline.co.uk)

THE  
GARDENS  
GROUP

Castle Gardens

1987 **30** 2017



**R F Eddington Limited**

*For all your*

*Carpentry, Plumbing, Roofing, Painting  
and House Maintenance*

**Tel: 01963 33585**



**CLASS MP - MEMBERS' Fuchsia**

**AWARDS** Certificate and Voucher  
to be displayed in a 6 inch 15cm pot (internal diameter)

**SECTION H CHILDREN'S SECTION**

**AWARDS -** Cups donated by Wincanton Trust and Certificates will be awarded. The Children's schedule is available separately.

**SECTION A  
AWARDS**

**VEGETABLES**

W.G.A. Challenge Cup  
Sid Pleasants Memorial Cup for Classes 1, 2 & 3  
Ted Pleasants Memorial Cup for Class 27  
John King Memorial Cup for Class 26  
Onion Cup – Class 6-10 and 14  
Certificates: a) Best Exhibit in Class 1  
b) Best Exhibit in Classes 2 – 24  
c) Best Exhibit in Class 25

**Class No**

- 1 Collection of potatoes, 3 varieties, 3 of each
- 2 Potatoes, white, 5
- 3 Potatoes, coloured, 5
- 4 Carrots, long pointed, 3, variety to be named (note c)
- 5 Carrots, other than long pointed, 3, variety to be named (note c)
- 6 Onions, large exhibition, (over 250g), 5
- 7 Onions, 250g or under, 5
- 8 Onions, collection (3 onions over 250g each, 3 onions under 250g each, 6 shallots large exhibition, 6 onions green salad)
- 9 Shallots, large exhibition, 12
- 10 Shallots, pickling, to pass through 30mm ring, 12
- 11 Leeks, 3
- 12 Beetroot, globe 3
- 13 Parsnips, 3
- 14 Garlic, 4 bulbs
- 15 Vegetable marrows, 1 pair
- 16 Beans, runner, 9
- 17 Cabbages, green, 2
- 18 Beans, dwarf, 9
- 19 Tomatoes, ordinary, 5
- 20 Tomatoes, small fruited (cherry), 10
- 21 Cucumbers (not mini), 2
- 22 Cucumbers (mini), 2
- 23 Lettuce, cabbage variety, 2
- 24 Any other vegetable not listed above – space allowed 31x31cm
- 25 Mini tray 31x31cm displaying – 2 potatoes, 2 onions, 2 carrots and 2 tomatoes
- 26 Collection of saladings 5 kinds, 3 of each kind space allowed 61x61cm
- 27 Collection of vegetables, 5 kinds, 3 of each kind space allowed 61x61cm

## SECTION B FRUIT

AWARDS Forrester Cup  
Certificates: a) Best Exhibit in Classes 29 – 35  
b) Best Exhibit in Class 36

- 29 Apples, cooking, Bramleys or Crimson Bramleys, 4
- 30 Apples, cooking, other than Bramleys, one variety, 4
- 31 Apples, dessert, one variety, 4
- 32 Pears, one variety, 4
- 33 Dish of any berry fruit, 10 berries of one variety
- 34 Dish of any stone fruit, 4
- 35 Dish of any other fruit not mentioned above
- 36 Collection of 3 kinds of fruit (not including nuts) (see notes)

**Note – only garnishing allowed in Sections 29 – 36 are leaves of the fruit variety/ies shown**



### Hints on Showing Fruit and Vegetables

1. Name varieties where possible, this could be a factor during the judging.
2. Choose all your produce for its condition, size, shape, colour and tenderness.
3. If the specimen is to be displayed with a number of others of the same variety then uniformity of these attributes will be very important.
4. All produce should be cleaned, washed or wiped being careful not to bruise or mark.
5. Pick fruit as near to the show time as possible. Currants should be picked with the strings attached.
6. Display should be one variety of fruit or vegetables in single dishes unless otherwise specified.
7. Trim tops of carrots, parsnips and beetroots and leave about 75mm(3") of leaf stalk which could be tied neatly.
  - Leave stalks on tomatoes and separate shallots.
  - When staging apples stalks point down, eye uppermost, do not cut stalks.
  - Pears should be arranged with stalks towards the centre.

**Always check entries accord with the schedule and leave your entry card beside your exhibit, name side down.**

## SECTION G HANDICRAFTS

AWARDS Challenge Cup  
Certificates a) Best exhibit in Classes 109 – 116  
b) Best exhibit in Classes 117 – 118  
c) Best exhibit in Classes 119 – 121

**N.B. Classes – Please state on your form size required for exhibition:**

**S = (31cm x 31cm), M = (41cm x 41cm), L = 61cm x 61 cm.)**

- 109 An article made from hard materials
- 110 A hand knitted or crocheted article
- 111 A piece of Machine Embroidery
- 112 A lace article
- 113 A patchwork or quilted article
- 114a) An original article of hand embroidery or tapestry work
  - b) An article of hand embroidery or tapestry – from design/kit
- 115a) A handmade 'Sapphire Anniversary' card with envelope, display space 25cm x 25cm.
  - b) A computer generated 'Sapphire Anniversary' card with envelope, display space 25cm x 25cm.
- 116 Something new from something old – soft materials only, accessories allowed **'Clear information must be displayed stating original items used.'**
- 117 A Drawing, pencil, charcoal or pen and ink
- 118 A Painting, any medium

### 2017 Photographic Classes

- 119 Harvest Time
- 120 A Single Bloom
- 121 Celebrations

**NOTE: Entries including mount in Classes 119 – 121 not to exceed 18 x 13cm. They should not have been previously exhibited at WDGA Shows**

### A Poem

- 122 Original poem 'By the Sea' your own composition.  
Decoration allowed. **Display on A4 paper.**

### 2018 Photographic Classes

- A Rockpools
- B Winter
- C Unusual Pub Signs



## WINCANTON GARDENERS WOULD

LIKE TO THANK



FOR THEIR GENEROUS

CONTRIBUTION TOWARDS THE

COST OF THIS SUMMER'S  
PLANTING



FOR THEIR SUPPORT

***WINCANTON GARDENERS ARE  
PLEASED TO HAVE BEEN PLANTING THE  
TOWN TWICE A YEAR FOR MANY YEARS***

## SECTION C FLOWERS

### AWARDS

Holbrook Cup

Jack Chilcott Cup for Dahlias (Classes 41 – 45)

Certificates: a) Best Exhibit in Classes 49 – 52

b) Best Flower Exhibit

- 38 Chrysanthemums, any type, 1 stem
- 39 Chrysanthemums, 3 stems
- 40 Chrysanthemums, any spray variety or varieties, 3 stems
- 41 Dahlias, cacti, 3 blooms, any variety
- 42 Dahlias, Decorative, 3 blooms, any variety
- 43 Dahlias, ball, over 52mm, 3 blooms
- 44 Dahlias, pompon, under 52mm, 3 blooms
- 45 Dahlias, 3 blooms of one variety and colour
- 46 Sweet Peas, 7 stems
- 47 Marigolds, African, 5 stems
- 48 Marigolds, French, 5 stems
- 49 Vase of roses, 5 stems
- 50 Roses, two or more varieties, 3 blooms
- 51 Rose, red, 1 bloom
- 52 Roses, cluster (floribunda) any variety/varieties, 3 stems
- 53 Asters, double, annual, 5 stems
- 54 Asters, single, annual, 5 stems
- 55 Pansies, 5 blooms
- 56 Gladioli, 1 spike
- 57 Gladioli, one or more variety/varieties, 3 spikes
- 58 Shrubs, flowering, one or more variety/varieties, 3 stems
- 59 A Vase of Garden Flowers – 7stems – at least 4 different kinds of plants
- 60 Flowering plant\*, pot not to exceed 15cm internal diameter, excluding Orchids
- 61 Foliage plant\*, pot not to exceed 15cm internal diameter
- 62 Fuchsia\*, pot not to exceed 15cm internal diameter
- 63 Cactus\*, any variety, pot not to exceed 15cm internal diameter
- 64 A flowering Orchid in a 15cm internal diameter container

\*See Rule 2

**SECTION D NOVICE AWARDS** Ireson Cup for vegetables and fruit,  
Classes 65 - 76  
Sansom Challenge Cup for flowers,  
Classes 77 - 81

- 65 Potatoes, one variety, 5
- 66 Carrots, one variety, 3
- 67 Beans, runner, 6
- 68 Onions, one variety, 3
- 69 Beetroot, one variety, 3
- 70 Courgettes, one pair
- 71 Collection of 3 named culinary herbs in a vase
- 72 Peppers, any type, named 3
- 73 Tomatoes, any type 3
- 74 Tomatoes, cherry, 6
- 75 Any other vegetable not listed (space allowed 31cm allowed)
- 76 Apples, cooking, one variety, 3
- 77 Dahlias, 3 stems of one variety
- 78 Rose, 1 bloom
- 79 Asters, double, 3 stems
- 80 A vase of cut flowers, at least 3 different kinds, 5 stems
- 81 Floral arrangement for frontal effect max width 46cm

## **SECTION E FLORAL ARRANGEMENT**

**AWARDS** Challenge Cup and Certificates

- 83 Table Top Exhibit – 'Shades of Blue/Lilac/Purple include flowers, foliage and accessories. (Front view only) Overall size 60cm.
- 84 Table Exhibit arrangement in a basket – include flowers, foliage and accessories (front view only). Overall size 60cm.
- 85 Table Centre – in a Teapot, include flowers foliage and accessories. To be viewed from all sides. Maximum overall size 40cm.
- 86 Small Jug shades of Blue/Lilac/Purple using flowers & foliage only. Overall max. size- 20 cm.

**Accessories should be used with restraint and be well integrated into the design within the defined area. Viewers eye should always go to the plant material first. No dyed / artificial material allowed.**



# **Garden Machinery Specialists**

Mowers - Tractors - Chainsaws - Brushcutters - Shredders - Cultivators and More!



- Expert Friendly Staff
- Leading Brands Stocked
- Domestic & Professional
- Largest Garden Machinery display in the South of England

**Opening Hours**

Monday - Friday 8.00am - 5.30pm  
Saturday 8.30am - 1.00pm  
(Saturday Opening March - June Inclusive)

## **SALES - SERVICE - SPARES**

# **Tel: 01963 828000**

Wincanton Business Park, Wincanton, Somerset, BA9 9RS

[www.rochfordretail.co.uk](http://www.rochfordretail.co.uk)  rochfordretail

## SECTION F HOMECRAFT

### AWARDS

The Association Rose Bowl

Certificates - a) Best exhibit in Classes 94 – 98

b) Best exhibit in Classes 99 – 107

*NB – Please remove wax discs where appropriate*

- 94 Jelly, any variety, named, one clear jar, cellophane cover
- 95 Jam, any variety, named, one clear jar, cellophane cover
- 96 Lemon Curd, 1 clear jar, cellophane cover
- 97 Marmalade, any variety, named 1 clear jar, cellophane cover
- 98 Chutney or pickle, named, 1 clear jar, cellophane cover
  
- 99 Bread, white or wholemeal, 1 loaf (*Made in a Bread maker*)
- 100 Fruit Cake (7inch or 17cm tin) round tin.
- 101 Chocolate Victoria Sponge Cake \*
- 102 Decorated Muffins 4
- 103 Sultana scones, 4 (*handmade and oven baked*)
- 104 Cheese Biscuits, 6 \*
- 105 Flapjacks 5 \*
- 106 Bake-well Tart, NO pastry lattice/icing only flaked almond decoration
- 107 Vegetarian Quiche with homemade short crust pastry.

\* **See Recipes at back of Schedule**

**Classes 99 – 107 To be covered in cling film**

**Classes 100 – 107 To be, displayed on a plastic or ceramic Plate - 26cm/10inch max.**

***N.B. No doily or card please***

**South West Coaches**

**Holiday Tours** **Private Hire** **Leisure Days** **Bus Services**

*Why not join us on a forthcoming leisure day...*

**Holidays**

- Thursday 7th September - Chateaux's, Wine & Gardens in the Loire Valley, 6 days
- Sunday 17th September - It's A Mystery, 4 days
- Sunday 24th September - Blackpool Illuminations, 5 days
- Sunday 18th October - Northumberland, 6 days
- Monday 16th October - Trains & Scenes of North Wales, 5 days
- Friday 20th October - London Theatre Break, 2 days
- Monday 13th November - Mistletoe & Wine in Morecambe, 5 days
- Friday 1st December - Bruges & Lille Christmas Markets, 4 days

**Leisure Days**

- Thursday 7th September - Hinton Ampner & Uppark House and Gardens
- Saturday 9th September - Ascot Races, Fine Wine & Food Festival
- Sunday 10th September - Scones & Songs at Stourhead and Shearwater
- Tuesday 12th September - Magic at the Opera, featuring Lesley Garrett
- Tuesday 12th September - Widecombe Fair
- Wednesday 13th September - Dorchester & Weymouth
- Saturday 16th September - Longleat Sky Safari & Exclusive House Tour (Optional)
- Saturday 17th September - Buckingham Palace, State Rooms
- Saturday 23rd September - Cardiff
- Sunday 24th September - Malvern Autumn Flower Show
- Wednesday 27th September - Les Miserables at The Queen Theatre, London

**2018 Holiday Brochure OUT NOW**

**Home Pick Ups On Holidays**

**Call us on 01935 475872**

**WWW.SOUTHWESTCOACHES.CO.UK**



# WINCANTON & DISTRICT GARDENERS' ASSOCIATION

## FLOWER SHOW AWARD WINNERS 2016

<u>CUP</u>	<u>Winner's name</u>
WGA Challenge Cup (veg. classes)	Mr A. King
John King Memorial Cup ( coll'n saladings )	Mr M Giles
Ted Pleasants Memorial Cup(coll'n veg.)	Mr A. King
Sid Pleasants Memorial Cup (potatoes)	Mr A. King
Onion Cup	Mr A. King
Forrester Cup (fruit classes)	Mr R D'Arcy/Mrs A Cook
Holbrook Cup (flowers)	Mr R D'Arcy
Jack Chilcott Cup (Dahlia classes)	Mr R D'Arcy
Ireson Cup (Novice fruit & vegetables )	Not Awarded
Sansom Cup (Novice flowers)	Not Awarded
Floral Arrangement Cup	Mrs P. David
Association Rose Bowl (Homecraft)	Mrs G D'Arcy
Handicrafts Cup	Mrs D. Noble
Clementina Cup (most points overall)	Mr A. King
Queen Elizabeth Diamond Jubilee Cup	Mr L Manning
The RHS Junior Exhibitor's Awards	
Children's Cup Group A (under4's)	no entries
Children's Cup Group B (4 – 7yrs.)	Not Awarded
Children's Cup Group C (8 – 11 yrs)	Not Awarded
Children's Cup Group D (12 – 15yrs)	Not Awarded
RHS Banksian Medal	Mr M Giles
RHS Runner Up Bronze Medal	Mr E Stokes
<u>Rose and Sweet Pea Show</u>	
Golesworthy Cup (sweet peas)	Mr L Manning
Bill Lewis Cup (Roses)	Mrs D Ridout
Emily Fencott (Flower of the month)	Mr R D'Arcy

# CERTIFICATE WINNERS

1. Best potato Collection	Class 1	Mr A King
2. Best Vegetable Exhibit	Class 2-24	Mr L Manning
3. Best Vegetable Mini Tray	Class 25	Mr A King
4. Best Fruit Exhibit	Class 29-35	Mr R D'Arcy
5. Best Fruit Collection	Class 36	*****
6. Best Rose Exhibit	Class 49-52	*****
7. Best Flower Exhibit	Section C	Mrs D McEwen
8. Best Floral Arrangement	Class 83-86	Mrs D Noble
9. Best Preserves Exhibit	Class 94-98	Mrs J Findley
10. Best Baking Exhibit	Class 99 -107	Mrs G D'Arcy
11. Best Handicraft Exhibit	Class 109-116	Mrs D Noble
12. Best Drawing/Painting Exhibit	Class 117-118	Mrs V Cook
13. Best Photographic Exhibit	Class 119-121	Mr R Wareham
14. Best Original Poem	Class 122	Mrs J Durham- Matthews
15. Best Members Petunia	Class MP	Mrs I Nicholls